

PRTG NETWORK MONITOR

Installed in Seconds.

Configured in Minutes.

Masters Your Network for Years to Come.

PRTG Network Monitor is ...

NETWORK MONITORING?

Network monitoring continuously collects current status information from your IT network to determine the availability and utilization of devices and to measure bandwidth usage. The IT administrator is informed immediately via email, text message, or other means if delays, malfunctions, or even failures are recorded. Historically collected data gives a long-term overview of the overall health and usage of the network.

Systematic network monitoring helps prevent outages, optimize networks, and improve services: Save time and money!



The 'sunburst view' shows the status of the whole network on a single screen.

... proven in more than 150,000 installations worldwide. Easy, failsafe, and complete control over your network.

... ONE SOFTWARE SOLUTION TO MONITOR YOUR ENTIRE NETWORK, INCLUDING DEVICES, APPLICATIONS, TRAFFIC, AND AVAILABILITY.

PRTG Network Monitor monitors Windows, Linux, Unix, and Mac OS systems. The solution supports SNMP, WMI, Flow monitoring, as well as packet sniffing, and monitoring of IPv6 devices.

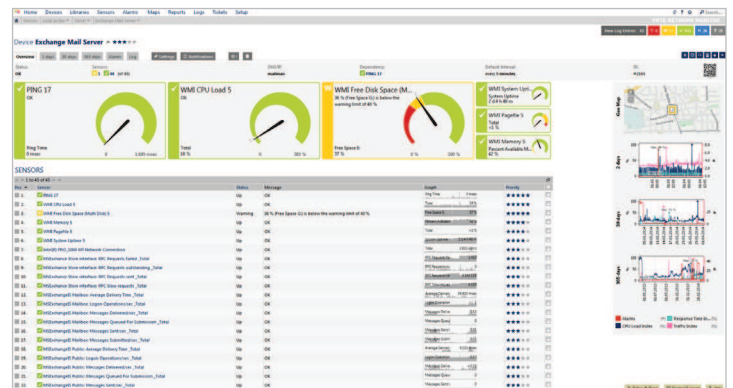
It offers about 200 pre-built sensors specifically designed for QoS monitoring, website monitoring, email monitoring, application monitoring, database monitoring, monitoring of virtual environments, and much more.

... A SCALABLE ENTERPRISE MONITORING SOLUTION.

The PRTG Network Monitor Enterprise Console supports viewing data of multiple PRTG installations at a glance: It displays aggregate information for all PRTG installations in one single program, even in huge setup scenarios.

This is ideal for enterprises that need to scale a large number of sensors.

EASY TO USE WEB INTERFACE



Fast and powerful, optimized for easy and intuitive use. This picture shows the device overview page including a graphic display of the most important sensors.

“... a stunning product. In my past life as a CIO, I've used quite a range of management and monitoring suites. In terms of price, ease of use, and rock solid stability, PRTG trumps them all.”

Technical Data

BASIC FEATURES

- Agentless monitoring of bandwidth, usage, activity, uptime, and SLA monitoring
- Suitable for networks of all sizes
- Automatic network discovery and sensor configuration (IPv4 and IPv6)
- Monitoring of multiple networks/locations with one license
- Failover cluster included in every license, multiple cluster nodes possible
- HTTP-based API for interfacing with other applications
- Customizing of the web interface using CSS, JavaScript and custom HTML code

SENSORS AND PROTOCOLS

- About 200 sensor types (Ping, HTTP, WMI, SMTP, POP3, DNS, and many others)
- Network traffic and behavior analysis using SNMP, NetFlow v5/v9, sFlow v5, jFlow v5, packet sniffing
- Smart sensors (e.g. automatic cognition of multiprocessor systems)
- Preconfigured device templates for Cisco routers, SQL servers, virtual systems, etc.
- Dedicated hardware sensors for Dell, HP, NetApp, and APC devices
- Sensors for monitoring virtualized environments (VMware, HyperV, Virtuozzo, XenServer, Amazon CloudWatch, etc.)
- Three-click dialog to add sensors
- Programmable triggers and custom sensors
- Native and agentless Linux and Mac OS monitoring
- Heuristic calculation detects correlations between sensors

DISPLAY

- Elegant, fast, and powerful web-based interface as single page application
- Geo maps integration via MapQuest, CloudMade, Google, etc.
- Customizable tree view display and individual libraries
- Enterprise Console for viewing multiple PRTG installations at a glance
- iOS App, Android App, and Mobile Web GUI for flexible monitoring
- Hierarchical view (probes, groups, devices, sensors, channels)
- List of sensors (alphabetical, top 10 by speed, by tag, by type, etc.)
- Appealing graphs showing the monitoring data of specified periods from hours up to years
- Customizable 'PRTG Maps' that bring together monitoring status, graphs, and tables, using personalized layouts

ALERTING AND REPORTING

- Alerts according to individually configured criteria
- Various means of notification (email, SMS, pager message, HTTP request, exe, script, syslog, etc.)
- Periodic and customizable reports (HTML, PDF)
- Detailed log files about all activities and results
- Ticket system

SYSTEM REQUIREMENTS AND DATA STORAGE

- Data is stored in powerful monitoring data storage system (no SQL server required)
- Small download file, easy to install, automatic software update
- Runs on Windows Server 2003, 2008 and 2012, XP, Vista, Windows 7 and Windows 8

LICENSING

- All features included in every license, no add-ons
- Easy upgrade to higher licenses by only paying the price difference

YOUR LOCAL CONTACT:

SAV25 Data Systems

Phone: (632) 416-0344 : (632) 975-1625

(632) 984-6055

Email: info@sav25.com

www.sav25.com

FREE 30 DAY TRIAL!

<https://shop.paessler.com/trial/prtg/989e91/>

410247/EN/20140601

All rights for trademarks and names are property of their respective owners.

www.paessler.com – info@paessler.com

 **PAESSLER**
the network monitoring company

“... THE COOLEST SOFTWARE I HAVE EVER USED!!
It does everything! So much better than our previous system.”

Marc Gulatto, Network & IS Administrator, Cornerstone Credit Union